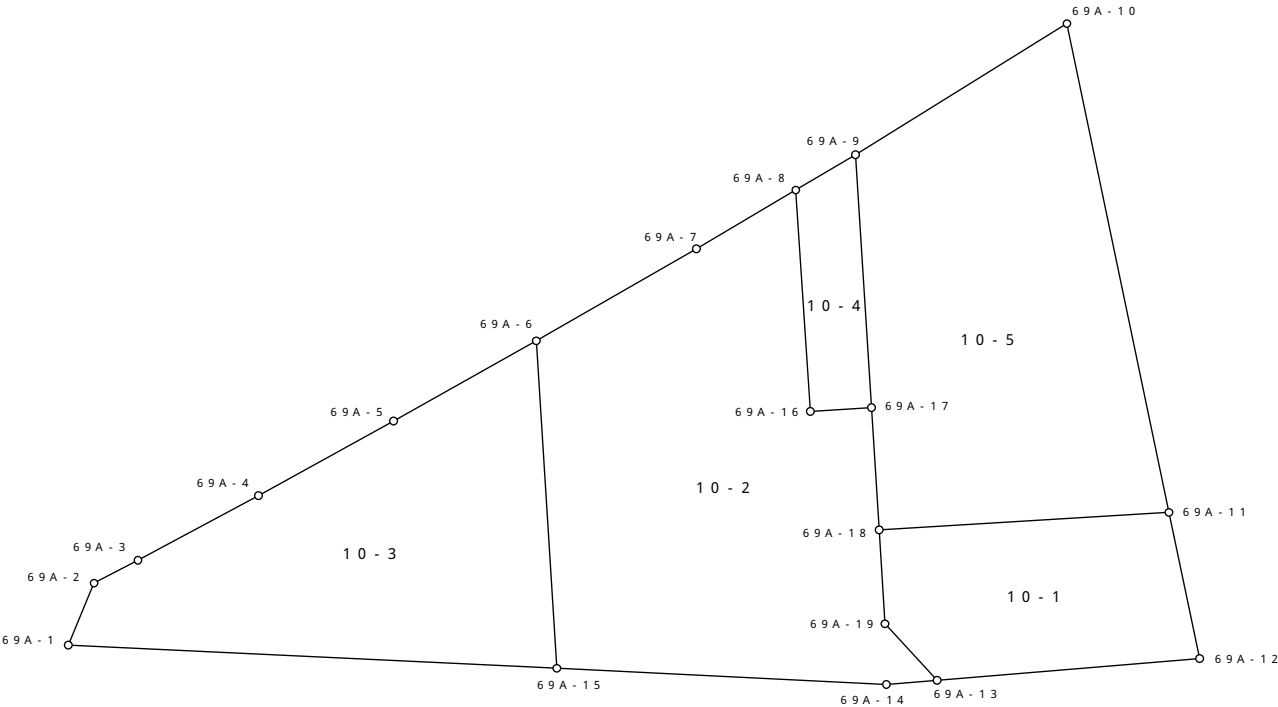


S = 1 : 250



参考資料

※記載内容は換地処分当時のものです。 上尾市

面積（座標法）計算書

地番 = 10-1
測点名

	[1] X(i)	[2] X(i+1)-X(i-1)	[3] Y(i)	[4] Y(i+1)-Y(i-1)	[2]*[3]	[1]*[4]	方向角	夾 角	距 離
69A-11	-3975.414	-0.368	-23076.178	11.405	8492.033504	-45339.596670	148-06-28	98-25-29	4.933
69A-12	-3979.602	-7.833	-23073.572	-5.295	180735.289476	21071.992590	245-14-04	82-52-24	8.701
69A-13	-3983.247	-2.483	-23081.473	-10.163	57311.297459	40481.739261	297-11-23	128-02-41	2.543
69A-19	-3982.085	4.013	-23083.735	-3.504	-92635.028555	13953.225840	336-27-37	140-43-46	3.110
69A-18	-3979.234	6.671	-23084.977	7.557	-153999.881567	-30071.071338	66-31-57	89-55-40	9.592
合計				倍面積	-96.289683	96.289683			28.879
				面 積	48.14	48.14			

面積（座標法）計算書

地番 = 10-2
測点名

	[1] X(i)	[2] X(i+1)-X(i-1)	[3] Y(i)	[4] Y(i+1)-Y(i-1)	[2]*[3]	[1]*[4]	方向角	夾 角	距 離
69A-6	-3977.242	14.611	-23097.770	-0.410	-337481.517470	1630.669220	40-04-33	116-20-14	6.104
69A-7	-3972.571	7.620	-23093.840	6.354	-175975.060800	-25241.716134	39-25-09	180-39-24	3.817
69A-8	-3969.622	-3.764	-23091.416	5.383	86916.089824	-21368.475226	156-12-46	63-12-23	7.336
69A-16	-3976.335	-5.900	-23088.457	4.814	136221.896300	-19142.076690	66-20-00	269-52-46	2.025
69A-17	-3975.522	-2.899	-23086.602	3.480	66928.059198	-13834.816560	156-21-28	89-58-32	4.052
69A-18	-3979.234	-6.563	-23084.977	2.867	151506.704051	-11408.463878	156-27-37	179-53-51	3.110
69A-19	-3982.085	-4.013	-23083.735	3.504	92635.028555	-13953.225840	117-11-23	219-16-14	2.543
69A-13	-3983.247	-1.866	-23081.473	0.726	43070.028618	-2891.837322	245-22-35	51-48-48	1.690
69A-14	-3983.951	-3.935	-23083.009	-11.957	90831.640415	47636.102107	252-46-27	172-36-08	10.910
69A-15	-3987.182	6.709	-23093.430	-14.761	-154933.821870	58854.793502	336-24-47	96-21-40	10.846
合計				倍面積	-280.953179	280.953179			52.433
				面 積	140.47	140.47			

面積（座標法）計算書

地番 = 10-3
測点名

	[1] X(i)	[2] X(i+1)-X(i-1)	[3] Y(i)	[4] Y(i+1)-Y(i-1)	[2]*[3]	[1]*[4]	方向角	夾 角	距 離
69A-1	-3991.984	-2.589	-23108.860	-15.334	59828.838540	61213.082656	2-29-02	70-13-46	2.215
69A-2	-3989.771	3.422	-23108.764	1.197	-79078.190408	-4775.755887	42-19-23	140-09-39	1.635
69A-3	-3988.562	4.583	-23107.663	4.117	-105902.419529	-16420.909754	41-47-36	180-31-47	4.525
69A-4	-3985.188	7.217	-23104.647	6.371	-166746.237399	-25389.632748	41-07-17	180-40-19	5.101
69A-5	-3981.345	7.946	-23101.292	6.877	-183562.866232	-27379.709565	40-38-34	180-28-43	5.407
69A-6	-3977.242	-5.837	-23097.770	7.862	134821.683490	-31269.076604	156-24-47	64-13-47	10.846
69A-15	-3987.182	-14.742	-23093.430	-11.090	340443.345060	44217.848380	252-42-48	83-41-59	16.160
合計				倍面積	-195.846478	195.846478			45.889
				面 積	97.92	97.92			

面積（座標法）計算書

地番 = 10-4
測点名

	[1] X(i)	[2] X(i+1)-X(i-1)	[3] Y(i)	[4] Y(i+1)-Y(i-1)	[2]*[3]	[1]*[4]	方向角	夾 角	距 離
69A-9	-3967.845	-5.900	-23089.960	4.814	136230.764000	-19101.205830	156-22-30	62-57-17	8.379
69A-17	-3975.522	-8.490	-23086.602	1.503	196005.250980	-5975.209566	246-20-00	90-02-30	2.025
69A-16	-3976.335	5.900	-23088.457	-4.814	-136221.896300	19142.076690	336-12-46	90-07-14	7.336
69A-8	-3969.622	8.490	-23091.416	-1.503	-196046.121840	5966.341866	39-19-47	116-52-59	2.297
合計				倍面積	-32.003160	32.003160			20.037
				面 積	16.00	16.00			

面積（座標法）計算書

地番 = 10-5
測点名

	[1] X(i)	[2] X(i+1)-X(i-1)	[3] Y(i)	[4] Y(i+1)-Y(i-1)	[2]*[3]	[1]*[4]	方向角	夾 角	距 離
69A-9	-3967.845	14.138	-23089.960	1.726	-326445.854480	-6848.500470	38-11-54	118-10-36	8.221
69A-10	-3961.384	-7.569	-23084.876	13.782	174729.426444	-54595.794288	148-12-10	69-59-44	16.507
69A-11	-3975.414	-17.850	-23076.178	-0.101	411909.777300	401.516814	246-31-57	81-40-13	9.592
69A-18	-3979.234	-0.108	-23084.977	-10.424	2493.177516	41479.535216	336-21-28	90-10-29	4.052
69A-17	-3975.522	11.389	-23086.602	-4.983	-262933.310178	19810.026126	336-22-30	179-58-58	8.379
合計				倍面積	-246.783398	246.783398			46.751
				面 積	123.39	123.39			